

Overview & Scrutiny Committee 27th June 2023

Levelling Up Project

Folkestone A Brighter Future (FABF)

Rod Lean (Chief Officer Place and Growth)

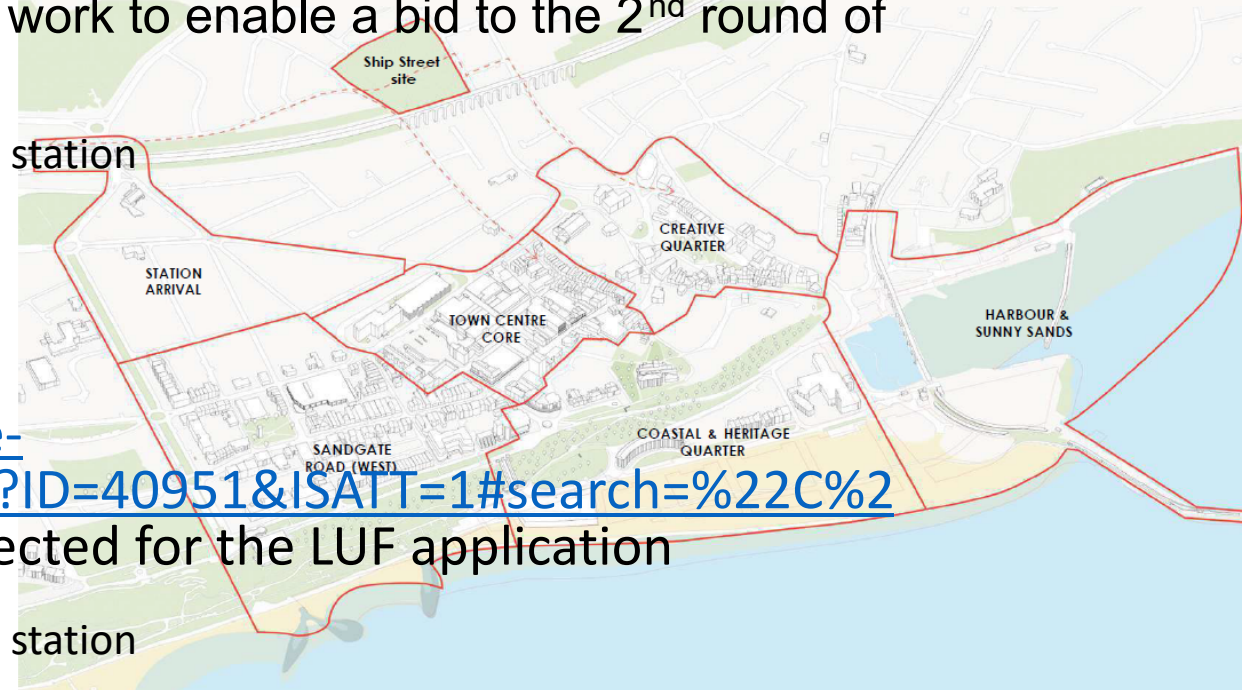
Matt Rain (Organisational Development & Engagement Senior Specialist)



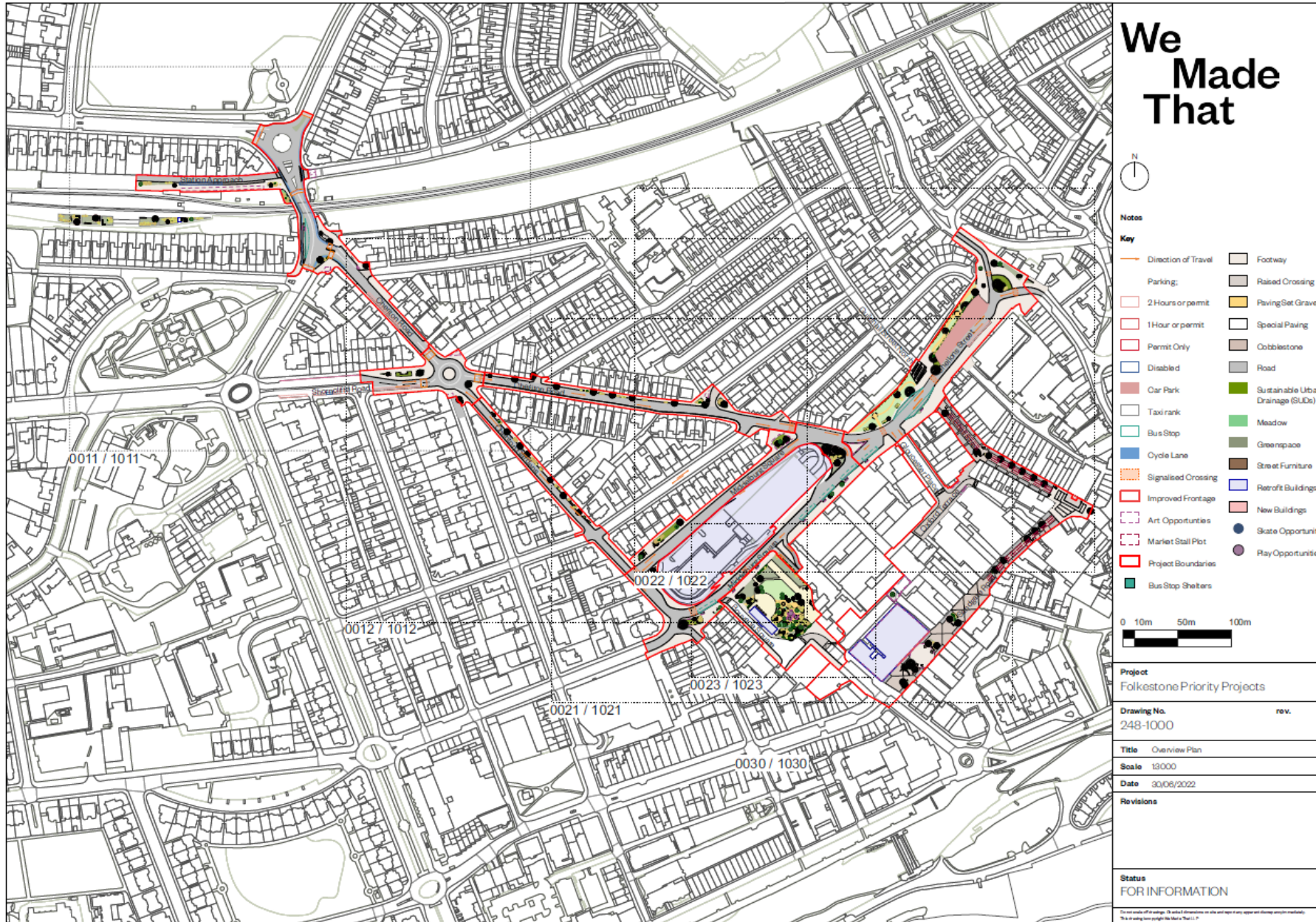
Levelling Up Fund - Overview



- In 2021, a Place Plan for Folkestone Town Centre was developed setting out the ambition for Folkestone Town Centre <https://www.folkestone-hythe.gov.uk/folkestoneplaceplan>
 - Urban Appraisal completed to inform the Place Plan output
 - More than 70 interventions identified
- September '21 Cabinet (C/21/34 <https://folkestone-hythe.moderngov.co.uk/mgConvert2PDF.aspx?ID=38588&ISATT=1#search=%22C%2f21%2f34%22>) approved further development work to enable a bid to the 2nd round of Levelling Up Fund for 6 priority projects
 - Station Arrival and Town Centre Connections
 - Improved Town Centre Gateway – road layout and bus station
 - Folca, Sandgate Road and Town Centre Public Realm
 - F51 Environs and Payer Park
 - Harbour Line and Tram Road
 - Sunny Sands
- June 22 Cabinet (C/22/14 <https://folkestone-hythe.moderngov.co.uk/mgConvert2PDF.aspx?ID=40951&ISATT=1#search=%22C%2f22%2f14%22>) The 3 projects below were selected for the LUF application
 - Station Arrival and Town Centre Connections
 - Improved Town Centre Gateway – road layout and bus station
 - Folca, Sandgate Road and Town Centre Public Realm



Overall Project Area

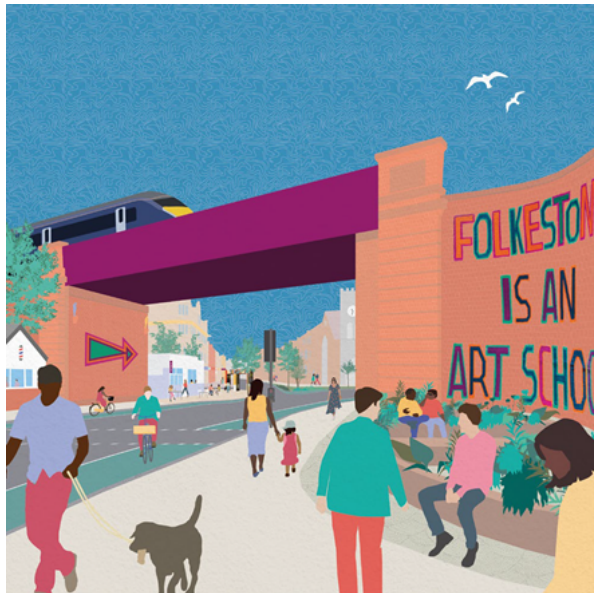
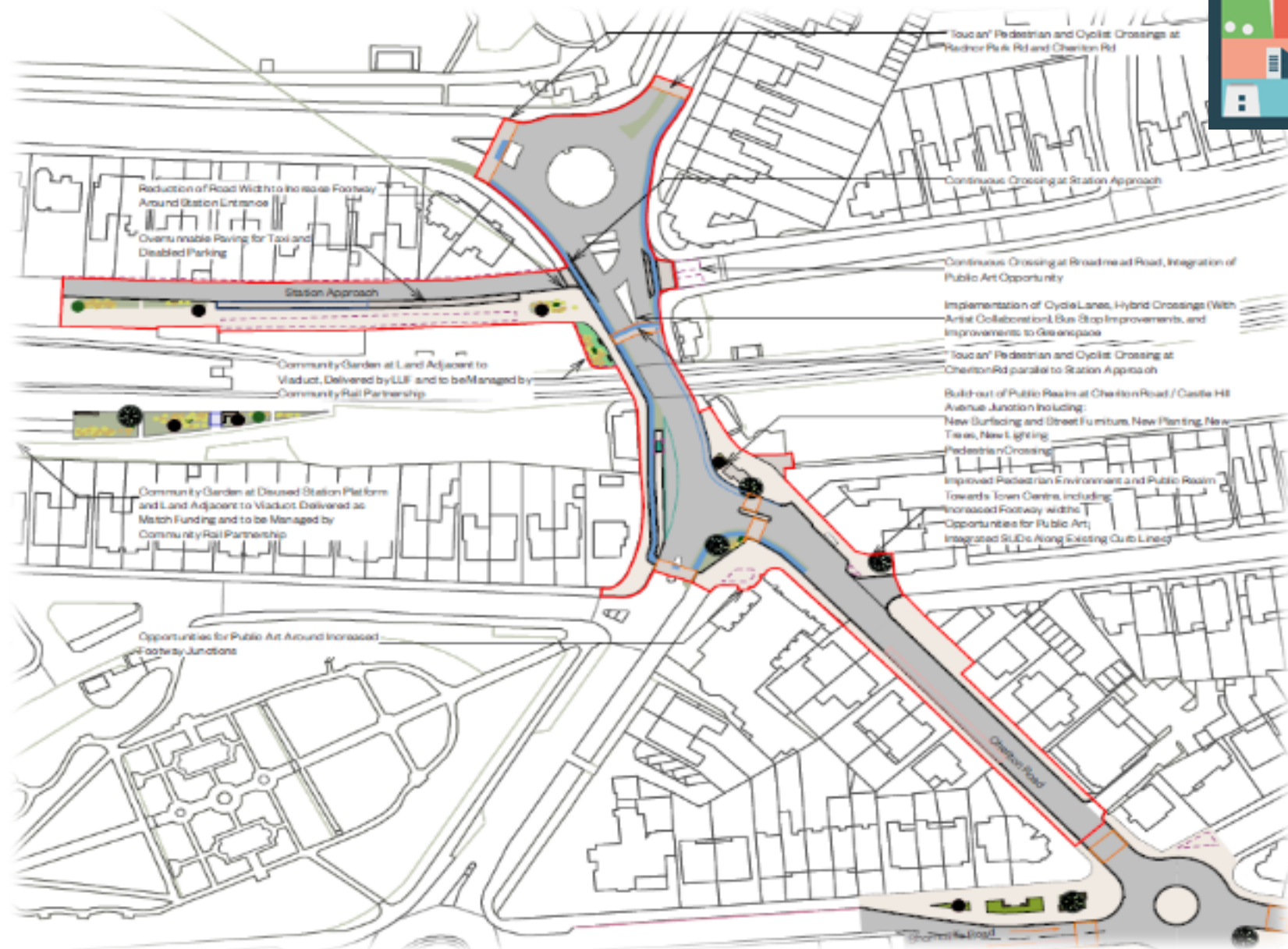


Station Arrival and Town Centre Connections



Station Arrival and Town Centre Connections

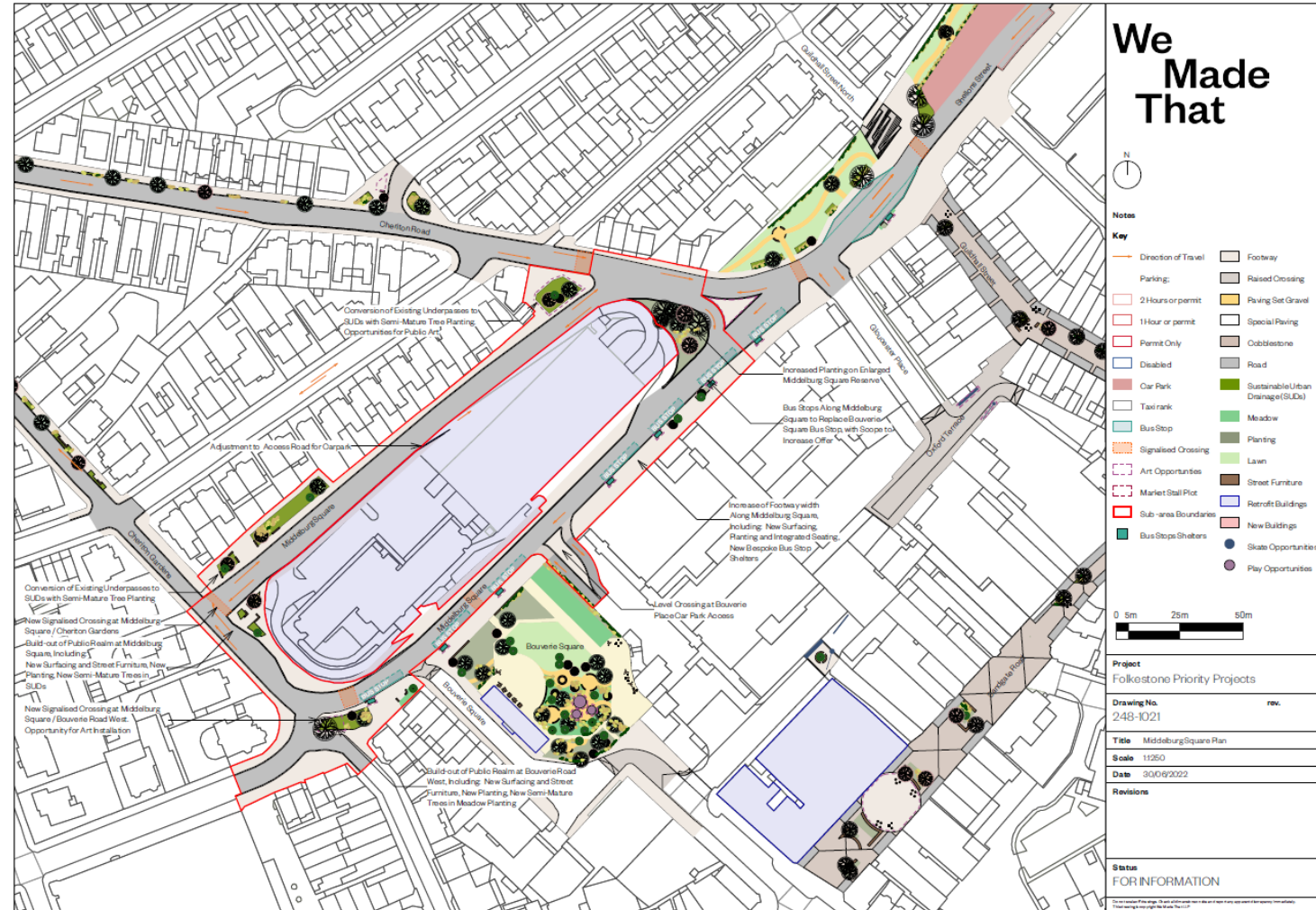
- Improving the “arrival” experience
- Additional planting opportunities
- More intuitive wayfinding



Improved Town Centre Gateway



- Overhaul of legacy highway system
- Introduction of more green space
- Relocation of bus station to linear bus stops
- Restoration of public square with green space and play area

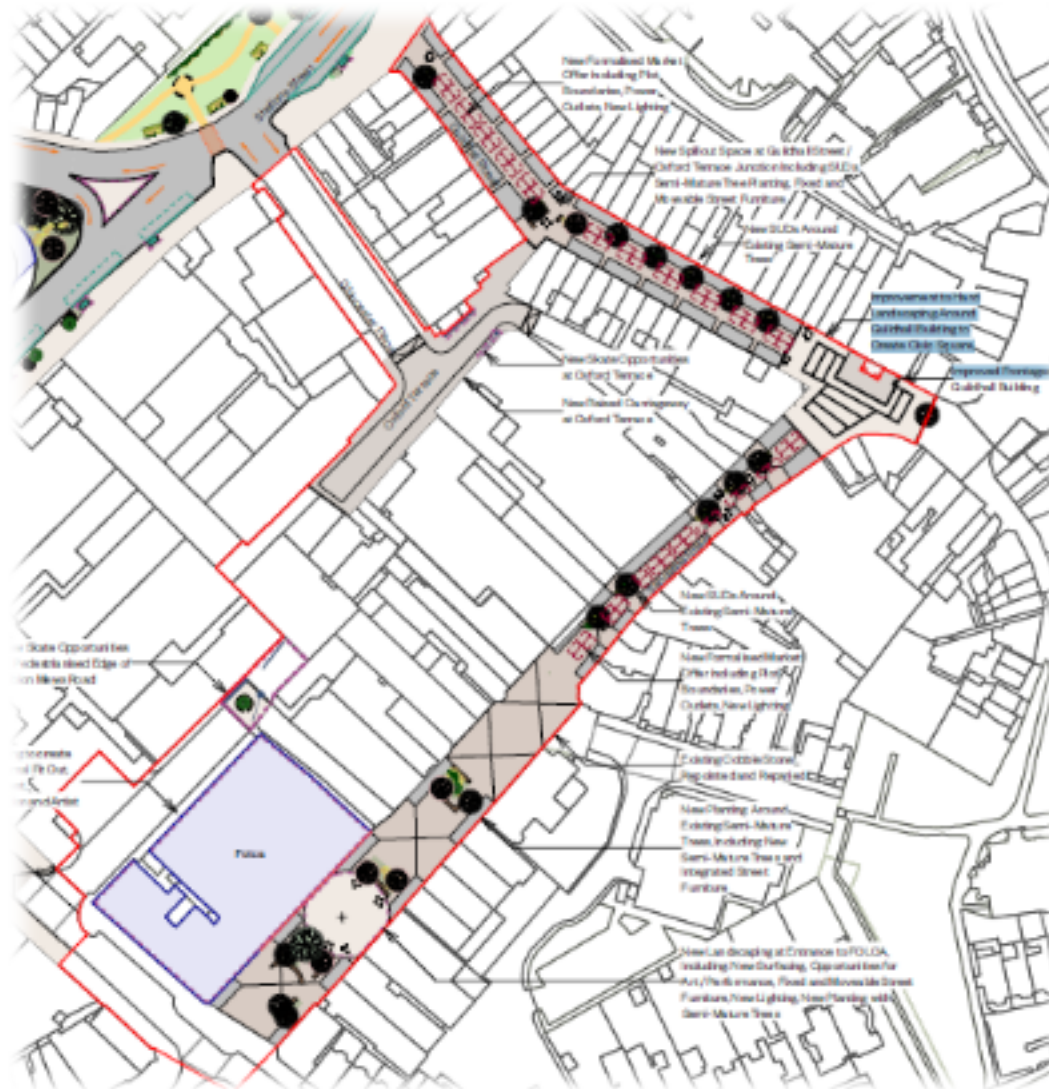


Folca, Sandgate Road and Town Centre Public Realm



- Refurbishment and separation of former department store to enable occupation
- New public realm in pedestrianised area (seating, and planting etc.)
- Animation to enable/support new uses

Public realm, wayfinding will be subject to artistic input and uplift adding to Folkestone's USP





Folkestone A Brighter Future

- Deliverability of projects required by 31 March 2025
- Passed subsidy control check and received MOU 17th March
- Inception meeting with DLUHC 17th April
- KCC are the delivery partner for highways /public realm works
 - Delivery Partner Agreement in development
 - Appointed **Aecom** design consultant for all Highways/public realm works
 - Phase 1 design feasibility report received April 23
 - Programme schedule is in draft for 2nd phase development
 - Tender for **artistic partner** awarded to Creative Folkestone
- Robust project management and governance in place with regular reporting back to members.



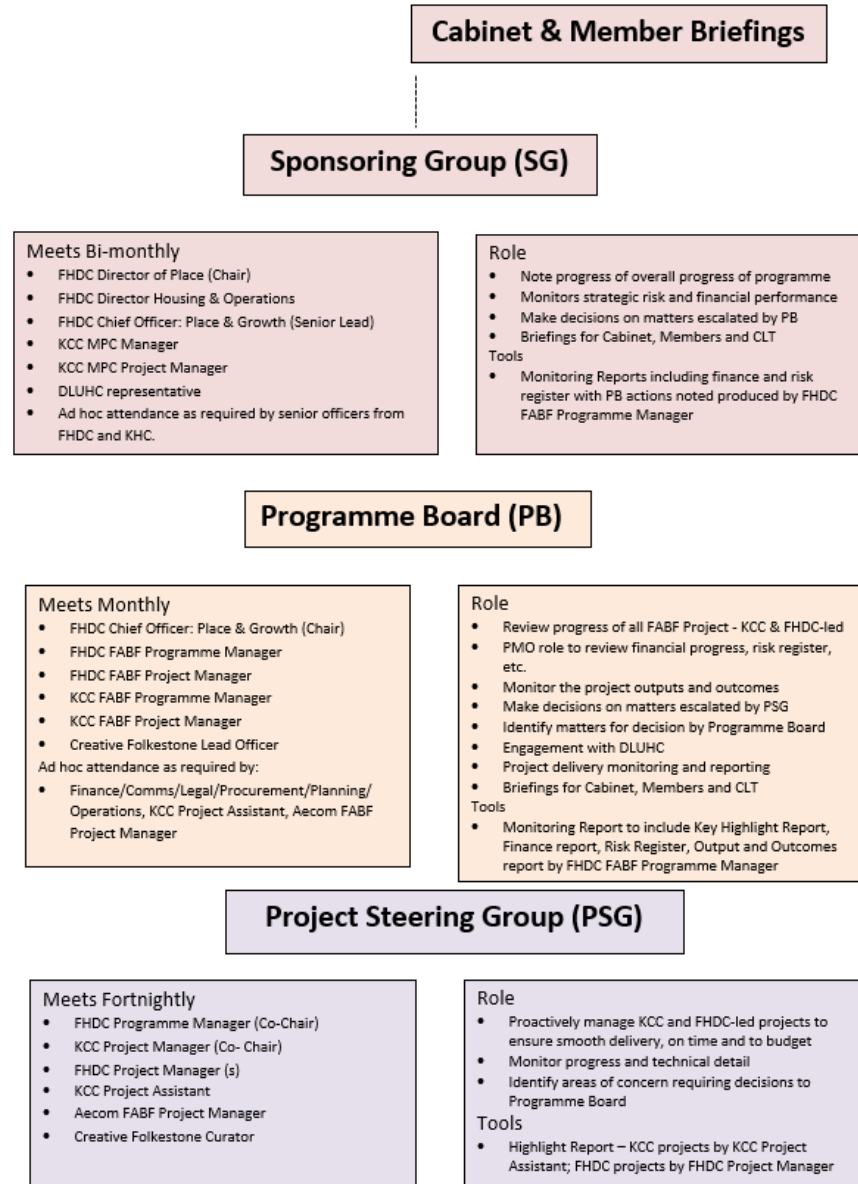
F-ABF Budget

The total cost (including professional and project management fees) of the projects are in the table below:

Project	£
Station Arrival and Town Centre Connections	£4,246,806
Improved Gateway to the Town Centre and Bouverie Square	£11,690,369
Folca, Sandgate Road and Town Centre Public Realm	£6,053,735
Total	£21,990,910

LUF 'ask' £19,791,819
FHDC funding £2,199,091

Governance Structure





Folkestone A Brighter Future

Communication and engagement strategy key objectives.

- To ensure insight is provided by stakeholders and the community into project activity, milestones, and potential impacts during construction.
- Stimulate a wide interest in the programme, it's purpose and expected outcomes.
- Ensure a 'voice for all' is enabled through creative and innovative means of engagement.
- Create an environment to promote genuine two-way communication.
- F&HDC communications platforms will keep the community abreast of programme progress and the timeline of activity and key milestones



Folkestone A Brighter Future

Communication and engagement strategy

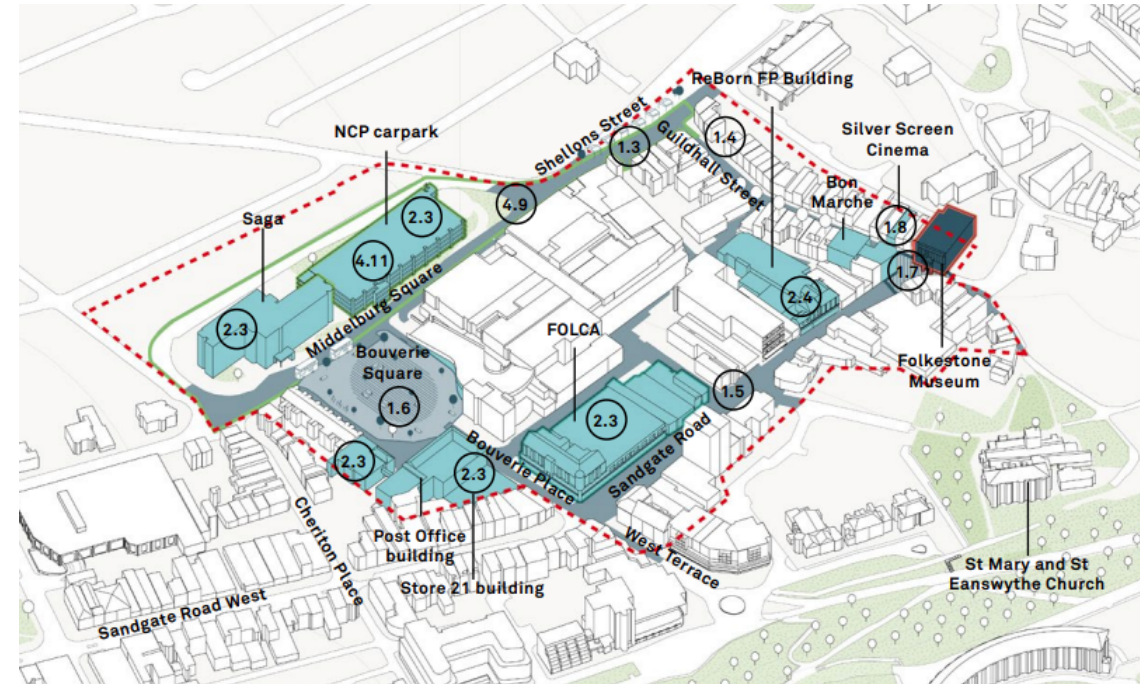
key Audiences :

- Internal stakeholders, members and strategic partners
- Wider stakeholder engagement
- Public engagement
- F&HDC Staff engagement

Folkestone A Brighter Future



- Communication and engagement strategy developed.
 - 1st public consultation expected early July on Station arrival, Cheriton Rd & Cheriton Gdns
 - 2nd Public Consultation aims to use new ways to engage through VR technology
 - Intention is to create a [digital twin](#) (2 minute video) of Folkestone Phase 2



Folkestone A Brighter Future



Legacy opportunities

- Can share the model with other stakeholders who can use it to visualise how developments will look
- Watford are using it for pre-apps and charging customers £500 as part of the planning application process
- Skills transfer to upskill members of staff and the local community in using VR and digital twinning models
- Wirral have found it is invaluable for *“Informing development projects, improving design, assisting with consultation and engagement, and to support business development.”*

Programme Schedule – key next steps

- Phase 1 Station arrival/Cheriton Road/Cheriton Gdns/Middelburg Sq.
 - Design review – June '23
 - Public engagement (exc. Middelburg Sq.) – July '23
 - RIBA stg 4 Technical design & approval – Jan '24
 - Public engagement “you said, we did” – Mar '24
 - Contractor procurement – Nov '23 to Sept '24
 - Construction – Mar '24 to Feb '25
- Phase 2 Bouverie Sq, Shellons St, Guildhall St and Sandgate Rd
 - Design review – Aug '23
 - Public engagement (inc. Middelburg Sq.) –September '23
 - RIBA stg 4 Technical design & approval - Feb '24
 - Public engagement “you said, we did” - Mar '24
 - Contractor procurement - Nov '23 to Sept '24
 - Construction – May '24 to Sept '25